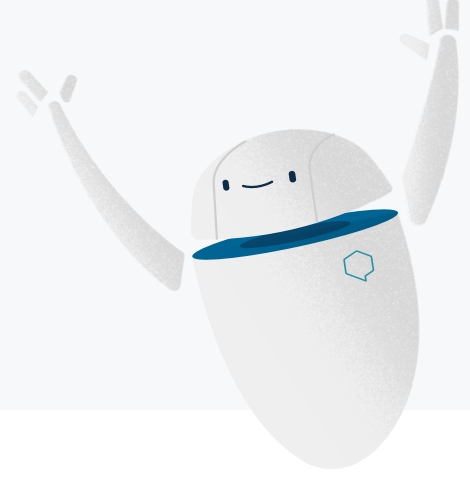




DeepL's goal is to use neural networks to **expand human possibilities, overcome language barriers, and bring cultures closer together.**



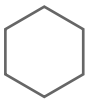
Company profile

DeepL is a German company that has set itself the goal of eliminating language barriers worldwide by using artificial intelligence.

Since 2017, it has offered DeepL Translator on www.DeepL.com, a machine translation system that, according to blind tests, achieves the best translation quality worldwide. It also provides professional products for companies, business people, and translators. So far, more than one billion people have used DeepL's services.

The exceptional quality of DeepL's machine translation is the result of proprietary improvements the team has made in the mathematics and methodology of neural networks.

The company is managed by founder and CEO Jaroslaw Kutylowski and is backed by world-renowned investors such as Benchmark and btov.



History of DeepL



- April 2021 • DeepL releases a mobile app for iPhone and iPad that allows users to easily access DeepL's accurate translations on the go.
- May 2020 • DeepL is the first free translation service to enable users to specify exactly how certain words and expressions should be translated. The feature, known as the Glossary, is an innovative interface between DeepL Translator's artificial intelligence and people's individual requirements and preferences.
- March 2020 • Chinese and Japanese are added to DeepL Translator. Many journalists test the system and confirm that DeepL offers significantly better translations than the competition in these languages, as well.
- February 2020 • DeepL achieves further research breakthroughs in the architecture of neural networks; another quantum leap in translation quality. DeepL's new translation system was also scientifically evaluated in blind tests conducted with professional translators. The results showed that the translators were four times more likely to prefer the translations from DeepL than from any other system.
- September 2019 • DeepL releases an application for Windows and MacOS that integrates into the system and allows users to translate from any application on their computer.
- December 2018 • DeepL Translator sees the addition of Russian and Portuguese. In these languages, too, the system achieves previously unknown translation quality.
- March 2018 • The free online service is supplemented by a paid version known as DeepL Pro. DeepL Pro offers API access, integration into translation software, and an optimized web translator. With the new DeepL API, developers can build the next generation of apps and tools, benefiting from DeepL's superior translation quality.
- August 2017 • DeepL Translator is released to the public, offering free translations between English, German, French, Spanish, Italian, Polish, and Dutch. Media outlets around the world echo the results of scientific testing: With never-before-achieved translation quality, DeepL has raised the bar for the entire field of machine translation.
- 2016 • Within Linguee GmbH, a team led by DeepL's founder Jaroslaw Kutylowski begins working on the first version of the DeepL Translator, a powerful new online translator based on neural networks. The team can leverage the existing dataset of the translating search engine Linguee. Many enhancements to the underlying neural networks are being developed, resulting in unprecedented translation quality.

Business model



To make our vision of a world without language barriers come true, DeepL offers the majority of its products free of charge and without advertising. In this way, more than one billion humans have profited from DeepL's services to date. DeepL thereby makes an important contribution to the world's coming together and to strengthening mutual understanding between cultures.

At the same time, the company offers paid products and services known as DeepL Pro. Customers can benefit from even better translation quality, greater personalization of translations and the highest standards for the protection of translated data. Developers receive API access that enables them to develop new products based on DeepL's translation technology.

DeepL is supported by world-renowned investors such as Benchmark (early-stage investor in Dropbox, eBay, Instagram, Snapchat, Twitter, Uber, and Yelp, among others) and btov.



Management



Jaroslaw Kutylowski, CEO

DeepL is managed by founder and CEO Jaroslaw Kutylowski, who holds a doctorate in computer science. The first version of DeepL Translator was developed in 2016 under Kutylowski's leadership, and was released to the market in 2017.